

Peak 320

Design: AART Designers



Peak 320 is developed as a multifunctional and high-performance luminaire with a minimalistic design. Engineered for easy switch between top and side mounting, the luminaire seamlessly integrates into the Peak universe.

Distinguished by its adaptive flexibility, the Peak 320 features a 90° adjustable swivel joint, allowing for easy installation on both arm and pole. Additionally, the luminaire has a very service-friendly design which ensures easy access to internal components from below, facilitating efficient maintenance and long-term reliability.

Peak 320

Design: AART Designers



Multifunctional mounting:

- Simple and functional design for both top- and side mounting
- Easy shift between pole (Ø60) and arm (Ø42, Ø48 og Ø60).



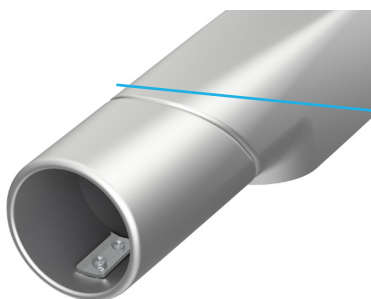
Modular design:

- The glass is secured with a single screw and opens downward. A rear hinge ensures that the glass remains firmly attached during access
- LED module is installed using a plug-in connection
- A recessed LED module with a white diffuser for comfort



Corrosion protection:

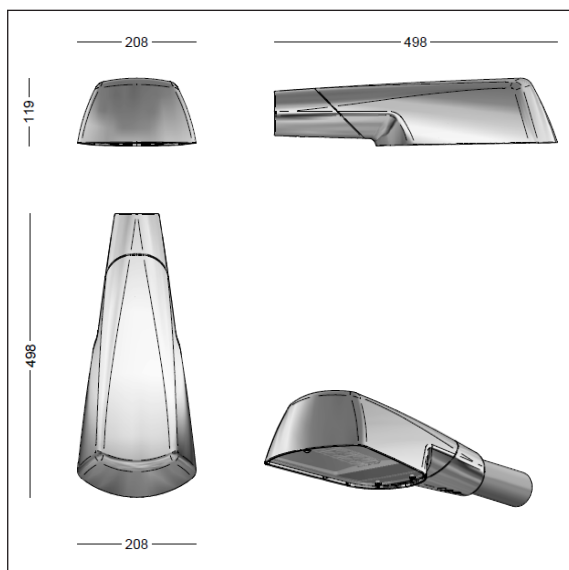
- Corrosion class C4 and C5
- Low-copper aluminium alloy for corrosion resistance
- All screw coils are pre-lubricated to ensure longevity, easy assembly and protection against galvanic corrosion
- Stainless steel threaded plate and precision clearance holes to secure mast and arm mounting
- Smooth and rounded edges for a refined finish and improved safety



FOCUS-LIGHTING

Peak 320

Design: AART Designers



Luminaire specification:

Material:	Cast aluminium
Finish:	Graphite grey: YW355F Silver grey: Y2370I Raw anodized
Shade:	4 mm hardened glass
Mounting:	On pole or arm, 60 mm top diameter
Connection:	Delivered with 6 m lead (post top), 2 x 1 mm ² When side entry, choose 8 m lead
Classification:	IP66, Class I or II
Impact resistance:	IK10 (with SR socket IK09)
Corrosion class:	C4, option for C5
Wind-sweeping area:	0,054 m ² (laterally)
Weight:	4,5 kg

Lamp specification:

FastFlex LED:	1 x FastFlex 2x6 DA
Lenses:	T3 lenses for local roads SCL lenses for pathways MEW lenses for traffic roads
Service life:	min. 100.000 hours at ta max 25°, L100B10
Colour temperature:	View configurator
Colour rendering:	View configurator
Colour accuracy:	5 steps SDCM

Driver specifikation:

Driver, 1xFF:	Xitanium Full Xi FP 22 W 0,2-0,7 A, program Xitanium Full Xi FP 40 W 0,3-1,0 A, program
Inrush current:	max 22 A (50% after 290 µs)
Nominal voltage, AC:	230 Vac
Operational input voltage, AC:	202-254 Vac
Nominal voltage range, DC:	186-250 Vdc
Operational input voltage, DC:	168-275 Vdc
Nominal input frequency:	50-60 Hz
Surge protection:	L/N-GND: 10 kV, (D4i driver: 8 kV) L-N: 6 kV
Operational life:	min 100.000 hours
Dimming:	5-steps dimming within the lumen intervals
Alternatives:	DALI-2 (4/5 conductor cable), LineSwitch or via Zhaga Book 18 socket, D4i

FOCUS-LIGHTING