

# Peak 320

Design: AART Designers



**Peak 320** is developed as a multifunctional and high-performance luminaire with a minimalistic design. Engineered for easy switch between top and side mounting, the luminaire seamlessly integrates into the Peak universe.

Distinguished by its adaptive flexibility, the Peak 320 features a 90° adjustable swivel joint, allowing for easy installation on both arm and pole. Additionally, the luminaire has a very service-friendly design which ensures easy access to internal components from below, facilitating efficient maintenance and long-term reliability.

# Peak 320

Design: AART Designers



## Multifunctional mounting:

- Simple and functional design for both top- and side mounting
- Easy shift between pole (Ø60) and arm (Ø42, Ø48 og Ø60).



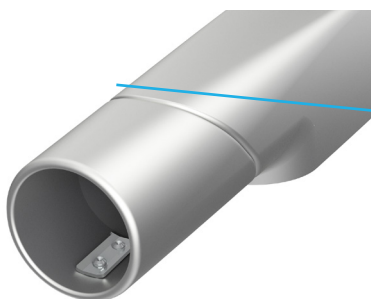
## Modular design:

- The glass is secured with a single screw and opens downward. A rear hinge ensures that the glass remains firmly attached during access
- LED module is installed using a plug-in connection
- A recessed LED module with a white diffuser for comfort



## Corrosion protection:

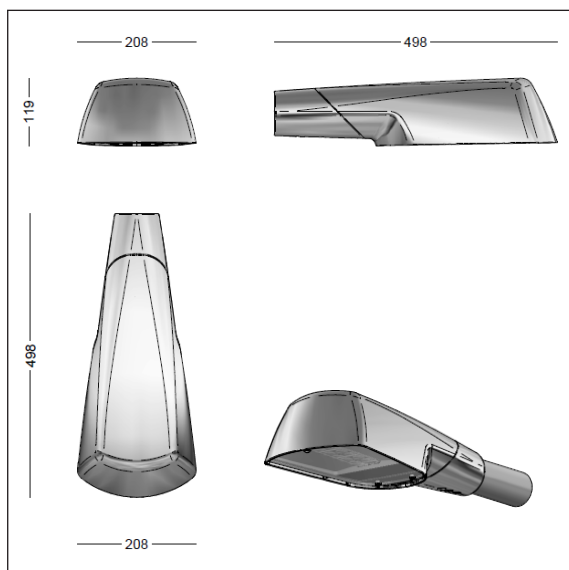
- Corrosion class C4 and C5
- Low-copper aluminium alloy for corrosion resistance
- All screw coils are pre-lubricated to ensure longevity, easy assembly and protection against galvanic corrosion
- Stainless steel threaded plate and precision clearance holes to secure mast and arm mounting
- Smooth and rounded edges for a refined finish and improved safety



**FOCUS-LIGHTING**

# Peak 320

Design: AART Designers



## Luminaire specification:

Material:	Cast aluminium
Finish:	Graphite grey: YW355F Silver grey: Y2370I Raw anodized Black: Noir 900 Sablé
Shade:	4 mm hardened glass
Mounting:	On pole or arm, 60 mm top diameter
Connection:	Delivered with 6,5 m lead (post top) or 8,5 m lead (side entry), 2 x 1 mm <sup>2</sup>
Classification:	IP66, Class I or II
Impact resistance:	IK10 (with SR socket IK09)
Corrosion class:	C4, option for C5
Wind-sweeping area:	0,054 m <sup>2</sup> (laterally)
Weight:	4,5 kg

## Driver specification:

<b>Driver, 1xFF:</b>	Xitanium Full Xi FP 22 W 0,2-0,7 A, program Xitanium Full Xi FP 40 W 0,3-1,0 A, program
Inrush current:	max 22 A (50% after 290 µs)
Nominal voltage, AC:	230 Vac
Operational input voltage, AC:	202-254 Vac
Nominal voltage range, DC:	186-250 Vdc
Operational input voltage, DC:	168-275 Vdc
Nominal input frequency:	50-60 Hz
Surge protection:	L/N-GND: 10 kV, (D4i driver: 8 kV) L-N: 6 kV
Operational life:	min 100.000 hours
Dimming:	5-steps dimming within the lumen intervals
Alternatives:	DALI-2 (4/5 conductor cable), LineSwitch or via Zhaga Book 18 socket, D4i

## Lamp specification:

**FastFlex LED:** 1 x FastFlex 2x6 DA, max 5150 lm

**T3 lenses for local roads, E-class:**

Luminous intensity class: G\*4

Output ratio: 97%

**SCL lenses for pathways, E-class:**

Output ratio: 93%

**MEW lenses for traffic roads, L-class:**

Luminous intensity class: G\*6

Output ratio: 95%

Service life:	min. 100.000 hours at ta max 25°, L100B10
Colour temperature:	2200, 2700, 3000 or 4000 Kelvin
Colour rendering:	min. 70 Ra, typically 75 CRI, option for 80 Ra
Colour accuracy:	5 steps SDCM

## LED-lumen, 1xFF, 22 W driver:

Ra 70	2200 K: 275-2550 lm, CLO, energy eff class: D 3000K: 330-3140 lm, CLO, energy eff class: D 4000K: 350-3380 lm, CLO, energy eff class: D
Ra 80	2700K: 275-2650 lm, CLO, energy eff class: E 3000K: 290-2800 lm, CLO, energy eff class: E 4000K: 310-2960 lm, CLO, energy eff class: D

## LED-lumen, 1xFF, 40 W driver:

Ra 70	2200 K: 190-3900 lm, CLO, energy eff class: D 3000K: 430-4800 lm, CLO, energy eff class: D 4000K: 460-5150 lm, CLO, energy eff class: D
Ra 80	2700K: 365-4050 lm, CLO, energy eff class: E 3000K: 385-4275 lm, CLO, energy eff class: E 4000K: 410-4500 lm, CLO, energy eff class: D

# Peak 320 - Product codes

Design: AART Designers

## Product-codes:

PEAK 320 FastFlex LED with T3 lenses for local roads, E-class											
Item No.	Item No.	Select colour, colour temperature, etc. in the table below									
8710-	LED 1xFF-DA 2x6, T3, low lumen, programmable										
8711-	LED 1xFF-DA 2x6, T3, high lumen, programmable										
PEAK 320 FastFlex LED with SCL lenses for pathways, E-class											
Item No.	Item No.	Select colour, colour temperature, etc. in the table below									
8712-	LED 1xFF-DA 2x6, SCL, low lumen, programmable										
8713-	LED 1xFF-DA 2x6, SCL, high lumen, programmable										
PEAK 320 FastFlex LED with MEW lenses for traffic roads, E classes											
Item No.	Item No.	Select colour, colour temperature, etc. in the table below									
8714-	LED 1xFF-DA 2x6, MEW, low lumen, programmable										
8715-	LED 1xFF-DA 2x6, MEW, high lumen, programmable										
Combine with:	Color		Color temperatur		Mounting		Control		Protection class		
	01	raw anodized	722	2200 K, Ra 70	T	post top	empty	programable	leer	class II	
	4	graphite grey	730	3000 K, Ra 70	U	side entry	D	DALI-2	J	class I	
	9	silver grey	740	4000 K, Ra 70			F	LineSwitch			
	66	black noir 900	827	2700 K, Ra 80			R	Zhaga sokkel nach upwards, D4i			
			830	3000 K, Ra 80			RC	City Touch/Interact City, D4i			
							S	Zhaga sokkel downwards, D4i			
							RS	Zhaga sokler nach up/down, D4i			
	Klassifikation										
	C5	C5 coating	In the case of extra corrosion protection, add C5 to the colour code; example: 8710-9C5830								
Example, item:	8710-9730T = Peak 320, 1xFF-DA 6x2, low lumen, T3 lense, silver grey, 3000K 70 Ra, post top, class II										