

Yoyo Outdoor

Design: C.F. Møller Architects



Yoyo Outdoor is the latest addition to the popular Yoyo series of elegant light fixtures designed by C.F. Møller Architects. Defined by its parabolic shape and distinctive profile, the series offer a unique and sculptural design.

With its harmonious design, Yoyo Outdoor elegantly connects indoor and outdoor environments. Crafted from high-quality material, it can withstand harsh outdoor environments, but still delivers a pleasant and atmospheric lighting experience.

Types:

For wall or ceiling

Size:

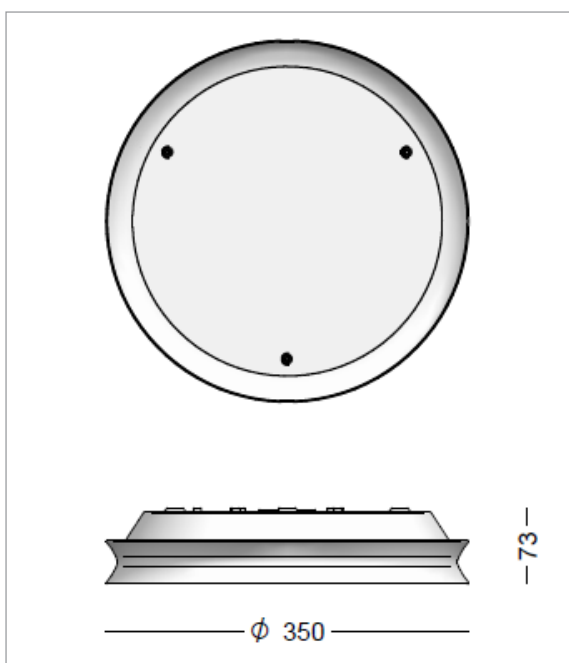
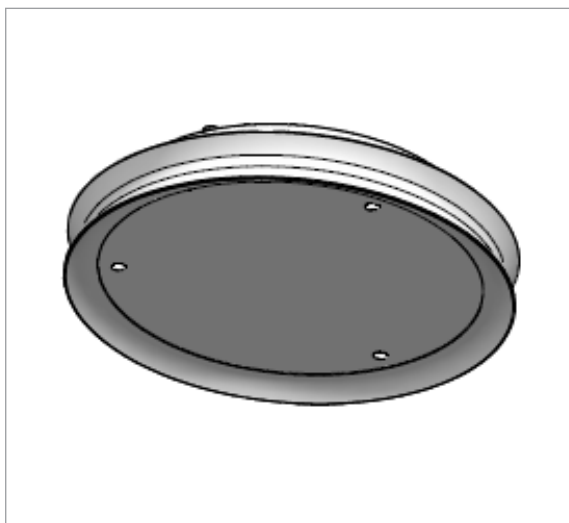
Diameter: 350 mm

Finish:

Raw aluminium
Raw anodized
Various RAL colours

Yoyo Outdoor

Design: C.F. Møller Architects



Luminaire specification:

Material:	Cast aluminium
Finish:	Raw aluminium, raw anodized white RAL9010, black RAL9005, alu-grey RAL9006, yellow RAL1032, orange RAL2003, blue-green RAL6004, squirrel grey RAL7000
Shade:	Opal-white acrylate PMMA
Mounting:	On ceiling or wall
Connection:	max 2 cables, 5x1.5 mm ² into 5-pole terminal block 2x2.5 mm ²
Classification:	IP65, class II, IK09
Corrosion class:	C4, C5 optional
Weight:	1,9 KG

LED and driver specification:

LED:	244 mm board
Operational life:	min 50,000 hours at ta 25°C L80B10
Colour temperature:	2700, 3000, or 4000 Kelvin
Colour rendering:	Ra 90
Colour accuracy:	3 Steps SDCM
Output ratio:	71%
Driver:	LED driver, 20W, dimming optional
In rush current:	max 5 A (50% after 50 µs)
Nominal voltage:	220-240V
Operational input voltage, AC:	198-264 Vac
Nominal Voltage, DC:	170-280
Nominal frequency range:	50-60 Hz
Surge protection:	L/N-GND: 4 kV, L-N: 2 kV
Operational life:	min. 100,000 hours
Dimming/control:	0-10, DALI, Triac

Product codes:

YOYO Outdoor								
Item No.	Lamp type	Select colour, colour temperature, etc. in the table below.						
6930-	11 W LED, 350 mA							
6931-	15 W LED, 500 mA							
Combine with:	Colour		Screen type		Colour temperature		Dimming/Control	
	0	raw untreated	empty	opal acrylic	927	2700 K, Ra 90	empty	no dimming
	01	raw anodized			930	3000 K, Ra 90	D	Dali-2
	1	white RAL 9010			940	4000 K, Ra 90	R	bluetooth sensor
	3	black RAL 9005					V	1-10 V
	19	alu-grey RAL 9006						
	102	yellow RAL 1032						
	103	orange RAL 2003						
	104	blue-green RAL 6004						
	105	squirrel grey RAL7000						
	Other RAL colors							
Example Item No.:		6930-0930D = Yoyo, 11 W, raw untreated, opal acrylic, 3000 K Ra 90, Dali						